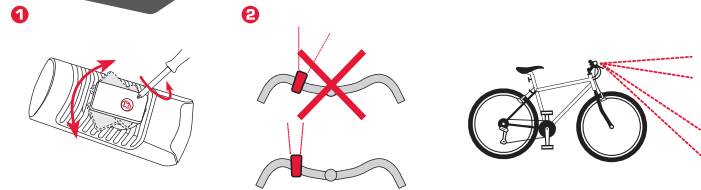
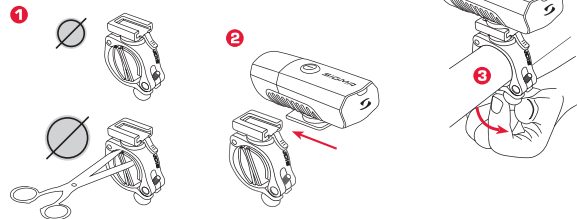


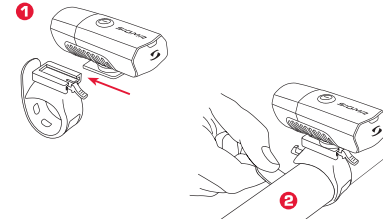
# BUSTER 300



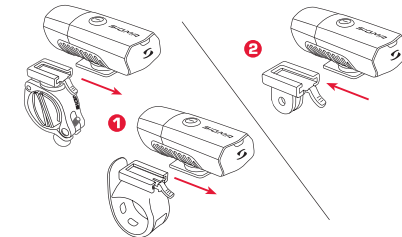
## SCREW-BRACKET HALTERUNG/ SCREW-BRACKET MOUNT



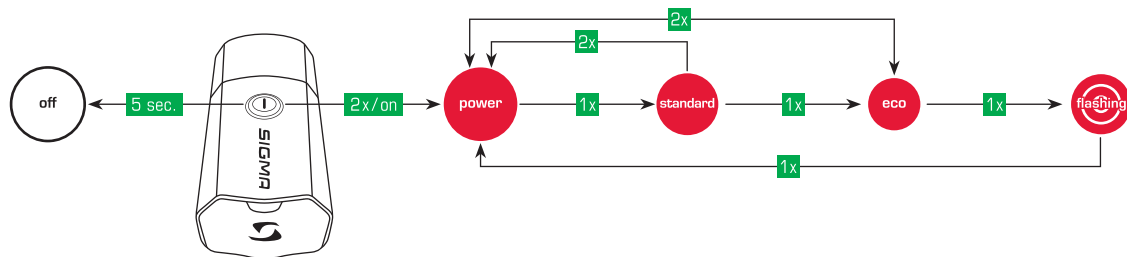
## SILIKON HALTERUNG/ SILICONE BRACKET



## ADAPTER FÜR ACTION CAMERA HALTERUNG/ ADAPTER FOR ACTION CAMERA MOUNT



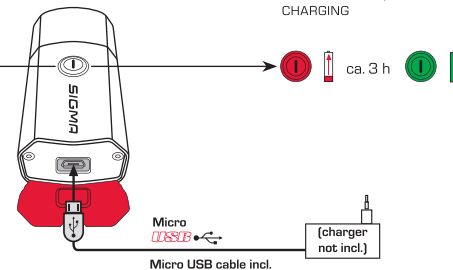
## DRÜCKEN DER BEDIENTASTE ZUM WECHSELN DER MODI/ PRESS BUTTON TO SWITCH MODES



## AKKUINDIKATOR/ BATTERY CONTROL

- > 75%
- 25-75%
- < 25%

## LADEVORGANG/ CHARGING



## SPRITZWASSERSCHUTZ/ SPLASH RESISTANT



Achten Sie bitte darauf, dass die rotmarkierte Abdichtung stets korrekt verschlossen ist, um das Eindringen von Wasser zu verhindern. / Please always keep the USB-Cover closed tight after charging to ensure water tightness.

#### EU-Konformitätserklärung

Hiermit erklärt SIGMA-ELEKTRO GmbH, dass sich die BUSTER 300 in Übereinstimmung mit den grundlegenden Anforderungen und den anderen relevanten Vorschriften der Richtlinie 2014/30/EU und RoHS Directive 2011/65/EU befinden. Weitere Informationen: [ce.sigmasport.com/buster300](http://ce.sigmasport.com/buster300)

#### CE Information

**EN** You can find the CE declaration at:  
[ce.sigmasport.com/buster300](http://ce.sigmasport.com/buster300)

**DE** Sie finden die Konformitäts-Erklärung unter folgendem Link:  
[ce.sigmasport.com/buster300](http://ce.sigmasport.com/buster300)

**FR** Vous trouverez la déclaration CE à l'adresse :  
[ce.sigmasport.com/buster300](http://ce.sigmasport.com/buster300)

**IT** La dichiarazione CE è disponibile all'indirizzo:  
[ce.sigmasport.com/buster300](http://ce.sigmasport.com/buster300)

**ES** Puede encontrar la declaración de conformidad CE en:  
[ce.sigmasport.com/buster300](http://ce.sigmasport.com/buster300)

**PT** Poderá encontrar a declaração CE em:  
[ce.sigmasport.com/buster300](http://ce.sigmasport.com/buster300)

**NL** U kunt de CE-certificering vinden op:  
[ce.sigmasport.com/buster300](http://ce.sigmasport.com/buster300)

**PL** Deklaracja CE znajduje się na stronie:  
[ce.sigmasport.com/buster300](http://ce.sigmasport.com/buster300)

**CZ** ES prohlášení najdete na adrese:  
[ce.sigmasport.com/buster300](http://ce.sigmasport.com/buster300)

**DK** Du kan finde EF-overensstemmelseserklæringen på:  
[ce.sigmasport.com/buster300](http://ce.sigmasport.com/buster300)

#### EU-Declaration of Conformity

SIGMA-ELEKTRO GmbH hereby declares that the BUSTER 300 comply with the fundamental requirements and other relevant regulations of Directive 2014/30/EU and RoHS Directive 2011/65/EU. For further information see: [ce.sigmasport.com/buster300](http://ce.sigmasport.com/buster300)

**FI** CE-vakuutus on luettavissa osoitteessa:  
[ce.sigmasport.com/buster300](http://ce.sigmasport.com/buster300)

**NO** Du finner CE-deklarasjonen under:  
[ce.sigmasport.com/buster300](http://ce.sigmasport.com/buster300)

**SE** Du kan hitta CE-deklarasjonen under:  
[ce.sigmasport.com/buster300](http://ce.sigmasport.com/buster300)

**RU** Декларацию о соответствии нормам ЕС Вы можете найти по адресу: [ce.sigmasport.com/buster300](http://ce.sigmasport.com/buster300)

**HU** A CE megfelelőségi tanúsítvány a [ce.sigmasport.com/buster300](http://ce.sigmasport.com/buster300) oldalon található.

**TR** AT uygunluk beyanını [ce.sigmasport.com/buster300](http://ce.sigmasport.com/buster300) adresinde bulabilirsiniz.

**RO** Declarația de conformitate CE poate fi găsită la: [ce.sigmasport.com/buster300](http://ce.sigmasport.com/buster300)

**BG** CE декларацията можете да намерите на: [ce.sigmasport.com/buster300](http://ce.sigmasport.com/buster300)

**SI** Izjavo CE najdete na [ce.sigmasport.com/buster300](http://ce.sigmasport.com/buster300)

**SK** ES vyhlásenie nájdete na adrese: [ce.sigmasport.com/buster300](http://ce.sigmasport.com/buster300)

#### ZUBEHÖR / ACCESSORIES

Art.-Nr. 18552



LADEGERÄT + MICRO USB KABEL  
CHARGER + CHARGING CABLE MICRO-USB

#### ZUBEHÖR / ACCESSORIES

Art.-Nr. 00467



HELMET BRACKET  
HELMHALTERUNG

#### ZUBEHÖR / ACCESSORIES

Art.-Nr. 00460



SCREW-BRACKET HALTERUNG  
SPARE SCREW-BRACKET MOUNT

#### ZUBEHÖR / ACCESSORIES

Art.-Nr. 00145



SILIKON HALTERUNG  
SILICONE BRACKET

#### LIGHTING SYSTEMS TOPLINE

**SIGMA**  
GERMANY



BUSTER 300

**SIGMA-ELEKTRO GmbH**  
Dr.-Julius-Leber-Straße 15  
D-67433 Neustadt / Weinstraße

**SIGMA SPORT USA**  
3487 Swenson Ave.  
St. Charles, IL 60174, U.S.A.

**SIGMA-ELEKTRO (Hong Kong) Ltd**  
Room 2010, 20/F, No.1 Hung To Road,  
Kwun Tong, Kowloon, Hong Kong



189500/1