



Product Service

CERTIFICATE

No. Z1A 18 04 24133 058

Holder of Certificate: Bellelli S.R.L.

 Via Meucci 232
 45021 Badia Polesine RO
 ITALY

Certification Mark:

Product:
Child seats for cycles
**Tested
according to:**

 EN 14344:2004
 PPP 53332C:2017
 AfPS GS 2014:01 PAK

The product meets the safety and health requirements of the German Product Safety Act section 20 to 22 ProdSG. The certification marks shown above can be affixed on the product. It is not permitted to alter the certification marks in any way. In addition the certificate holder must not transfer the certificate to third parties. This certificate is valid until the listed date, unless it is cancelled earlier. See also notes overleaf.

Test report no.:

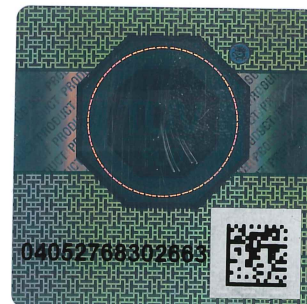
028-713127717

Valid until:

2023-04-03

Date, 2018-04-20

(Robert Ziegler)



Page 1 of 2



Product Service

CERTIFICATE**No. Z1A 18 04 24133 058****Model(s):**

B-One
(Clamping systems:
Standard; Clamp)

Parameters:

Total width:	395 mm
Width of the seat area:	255 mm
Total height:	757 mm
Height of the backrest:	407 mm
Depth of the seat area:	182 mm
Mounting position:	Behind the driver
Seat classification:	A22
Colour seat shell:	dark grey, beige
Colour footrest:	red, orange
Colour cushion:	red, orange
Material:	PP (Shell)
	PP, PE, POM, PC, PA (add on parts)
Total weight "Standard"	
(Frame mounting):	2,9 kg + 0,5 kg (mounting device)
Total weight "Clamp"	
(Rack mounting):	2,4 kg

Factory(ies):

24133